



Term 1 March 2026

ST FRANCIS XAVIER COMMUNITY NEWSLETTER

admin@sfx.wa.edu.au



LEADING COMMUNITY

JUSTINE SMITH - PRINCIPAL

Dear Parents and Caregivers,

As we reach the midpoint of the term and begin the sacred season of Lent, I would like to take a moment to reflect on what has already been a positive and productive start to our school year.

Consistent and Predictable Routines

Our students have settled exceptionally well into their new classes and routines. It has been wonderful to see classrooms filled with enthusiasm, engagement and a strong sense of belonging. A key focus across the school has been establishing consistent and predictable routines. These structures help our children feel safe, confident and ready to learn each day. When students know what to expect, they are better able to take risks in their learning and develop independence.

Building Relationships

Equally important has been our commitment to building strong, respectful relationships, with one another, with our families and most importantly with our students. Positive relationships remain at the heart of everything we do. Thank you for the partnership you continue to show in supporting your child's growth, wellbeing and learning.

Lent

As we enter Lent, we are reminded that this is a season of reflection, prayer, sacrifice and service. It is a time to ask ourselves: *What can I contribute?* As a school community, we encourage our students to think about small but meaningful ways they can make a difference; through kindness, generosity, forgiveness and acts of service. Together, we can model for our children how to live out our faith in practical and compassionate ways.



"LEADERSHIP IS UNLOCKING PEOPLE'S POTENTIAL TO BECOME BETTER."

BILL BRADLEY

LEADING COMMUNITY

JUSTINE SMITH - PRINCIPAL

Communication

Clear communication between school and home is essential. If you have any queries, concerns or require clarification regarding your child's learning or wellbeing, your first step is to contact your child's class teacher. Open and respectful communication ensures we can work together promptly and effectively.

SEQTA

Please continue to check SEQTA Engage regularly for notices, updates, learning information and upcoming events. Our newsletters and official communications will continue to be shared via SEQTA and email. Our school Facebook page has regular weekly reminders as well as sharing with our community the many wonderful things that happen at our school. If you require assistance accessing SEQTA, please contact the school office, we are very happy to help. Ensuring all families can access this platform is a priority for us.

URSTRONG

URSTRONG's whole-school friendship strategy has improved the social climate in schools around the world, connecting over a million kids, parents, and teachers with a common language of friendship. We are proud to be a URSTRONG School and are committed to empowering your children with friendship skills.

You are invited to take advantage of a [FREE Parent Membership](#) to access hundreds of resources – including an 8 session video series. This will allow you to learn the same language & strategies being taught in the classroom through the Friendology 101 curriculum. We hope that, as a URSTRONG Family, you will reinforce the important messages of empowerment, self-compassion, & kindness at home.

As a next step, we would recommend:

- [Click here](#) to view an overview of URSTRONG.
- Activate your [FREE Parent Membership](#) and explore all the resources available to your family.
- Explore the hundreds of resources available to you!



We believe that empowering our students with these skills will create a culture of kindness at our school and we hope that, together, we can support your children to have healthy, feel-good friendships.

Pray for Peace

During this Lenten season, we also hold in our prayers all those in our world affected by conflict and uncertainty. May we continue to pray for peace, in our hearts, in our community and across the world. May our school always be a place where compassion, understanding and hope flourish.

Thank you for your continued support of our wonderful school community.

Justine Smith



A FAITH COMMUNITY

SIMON PLACE - ASSISTANT PRINCIPAL

The Season of Lent

As we journey through the season of Lent, our school community is invited to slow down, reflect, and prepare our hearts for Easter. Lent is a special time in the Church year when we focus on three important practices that help us grow closer to God and to one another:

1. Prayer. During Lent, we make extra time to talk and listen to God. This might be through class prayer, quiet reflection, or simply taking a moment in our day to pause and be still.

2. Fasting. Fasting is about doing without something—like treats, screen time, or a favourite activity—to help us practise self-control and remember what truly matters. It reminds us to appreciate what we have.

3. Almsgiving. Almsgiving means showing generosity and helping those in need. This is a powerful way of putting our faith into action during Lent.

At St Francis Xavier, one of the ways we live out this call to almsgiving is through our support of Caritas Australia's Project Compassion. Each year, Project Compassion invites us to walk alongside communities around the world who are striving for a better future.

This term, our major fundraiser will be the **Big Walk for Water, held on Friday 27 March.** Students will learn about how access to clean water affects families globally, and they will walk in solidarity with millions of people who travel long distances each day to collect safe water.

Together, through prayer, fasting, and almsgiving, we are helping make a real difference in the lives of others. Thank you for supporting our Lenten journey and Project Compassion this year.

CARITAS AUSTRALIA
PROJECT
COMPASSION
 Unite Against Poverty this Lent

Keeping Our Year 3 Students in Your Prayers

As we continue our journey through the season of Lent, we ask our school community to keep the children in Year 3 in their thoughts and prayers. Over the coming weeks, our Year 3 students will be preparing to celebrate their First Reconciliation toward the end of the term.

This is a very special time in their faith journey. First Reconciliation is the first of the three Sacraments of Initiation that our students will celebrate throughout the year, marking an important step as they come to understand God's love, forgiveness, and mercy in a deeper way.

We pray that their preparation will be a time of peace, reflection, and growing in friendship with Jesus. May they feel supported by their families, teachers, and the whole St Francis Xavier community as they learn about God's endless compassion.

Thank you for joining us in praying for our Year 3 students during this significant and faith-filled time.



Need Help with SEQTA?

If you are experiencing any issues with SEQTA—whether it's logging in, accessing student information, or navigating any of the features—please know that help is available.

Don't hesitate to get in touch. I'm more than happy to support you and work through any problems you may be having.

You can contact me directly at simon.place@cewa.edu.au.

Simon Place

"FAITH IS TAKING THE FIRST STEP EVEN WHEN YOU DON'T SEE THE WHOLE STAIRCASE."

MARTIN LUTHER KING

A LEARNING COMMUNITY

BELINDA HOSKING - ASSISTANT PRINCIPAL

SFX Learning Programs

At our school, we are proud to offer high-quality, evidence-based learning programs that support every child to thrive. These programs provide structured, engaging and targeted instruction that builds strong foundational skills. They also promote confidence and independence while ensuring consistent, high-impact teaching across all classrooms. Programs that we are using in 2026 include:

PreLit – Early Literacy Foundations (Kindy)

PreLit is a play-based program designed for children to develop early literacy skills. It focuses on phonological awareness, oral language development, and print knowledge, setting the foundation for successful reading and writing.

Benefits for students:

- Strengthens phonemic awareness and letter recognition.
- Develops early vocabulary and oral language skills.
- Provides an engaging, play-based introduction to literacy.

Initialit – Early Years Literacy Program (Year 1 - Year 2)

Initialit is a whole-class literacy program for students in the early years, focusing on phonics, reading, and oral language development. It provides explicit instruction in literacy skills, ensuring students build a strong foundation for future learning.

Benefits for students:

- Develops essential phonics and reading skills.
- Encourages a love for reading through engaging storybooks.
- Supports students of all abilities with structured, research-based teaching

Spelling Mastery – Structured Spelling Development (Year 3-6)

Spelling Mastery is a direct instruction program that teaches students spelling through a logical, sequential approach. It combines phonemic, morphemic, and whole-word strategies to reinforce spelling patterns and rules.

Benefits for students:

- Develops strong spelling and word recognition skills.
- Enhances vocabulary and literacy confidence.
- Provides a structured approach to improve writing accuracy.

Maths Trek (Year 3-6)

Maths Trek is a mathematics program designed to build strong number sense and deep mathematical understanding. It provides a structured, sequential approach to learning, ensuring students develop essential skills while also building confidence in problem-solving and reasoning.

Benefits for students:

- Builds strong number sense and foundational skills
- Develops fluency, reasoning and problem-solving abilities
- Encourages mathematical thinking and discussion

UR Strong

UR Strong is a whole-school wellbeing initiative designed to support students' social and emotional development. It provides children with a common language and practical tools to build healthy friendships, manage conflict and develop resilience.

Benefits for students:

- Develops strong friendship skills
- Builds resilience and confidence
- Teaches healthy conflict resolution strategies

Second Step – Social and Emotional Learning (3YO-Year 6)

Second Step is a social-emotional learning (SEL) program that teaches students essential life skills such as emotional regulation, empathy, and positive decision-making. Through engaging lessons, discussions, and role-playing activities, students learn to navigate social situations and build healthy relationships.

Benefits for students:

- Enhances self-awareness, emotional regulation, and resilience.
- Encourages positive social interactions and conflict resolution.
- Fosters a safe, respectful, and inclusive school environment.

KIDDO – Developing Fundamental Movement Skills (K - Year 2)

KIDDO is a physical development program designed to improve students' fundamental movement skills (e.g., running, jumping, balancing, and throwing). The program is based on research from The University of Western Australia and helps children develop confidence and competence in physical activity.

Benefits for students:

- Enhances coordination, balance, and overall physical development.
- Encourages active participation and a love for movement.
- Supports lifelong health, fitness, and well-being.

Belinda Hosking

A LEARNING COMMUNITY

BELINDA HOSKING - ASSISTANT PRINCIPAL

NAPLAN

NAPLAN (National Assessment Program – Literacy and Numeracy) is a nationwide assessment for students in Years 3 and 5 that measures skills in reading, writing, spelling, grammar and punctuation, and numeracy. The purpose of NAPLAN is to provide a snapshot of student progress against national standards and to help schools understand how well students are developing essential literacy and numeracy skills.

The information gained supports teachers in identifying strengths and areas for growth, informing future teaching and learning programs. While NAPLAN is just one of many assessment tools we use, it provides valuable insights that help ensure every student receives targeted support and opportunities to continue progressing with confidence.

Test schedule:

| | |
|-------------------------------|--|
| Wednesday 11 March | Writing Test Year 3: 40 minutes (on paper) Year 5: 42 minutes (on iPad) |
| Friday 13 March | Reading Test Year 3: 45 minutes Year 5: 50 minutes |
| Monday 16 March | Conventions of Language Test Year 3: 45 minutes Year 5: 45 minutes |
| Tuesday 17 March | Numeracy Test Year 3: 45 minutes Year 5: 50 minutes |

Parents and carers receive clear information to help them understand NAPLAN and their child’s results. The *NAPLAN Information for Parents and Carers brochure* has already been sent home with students and provides an overview of the assessments, what they involve, and how results are reported.

Later in the year, families will receive an *Individual Student Report*, which outlines their child’s achievement in each assessment area and shows how they are performing against national standards. This report provides helpful insights into your child’s progress and can support conversations about their ongoing learning and development.


Reporting

Student Led Conferences will be held during the final few weeks of this Term and Term 3 for Year 3 - 6 students. These are an opportunity for students, families and teachers to share student learning.

The student provides information about what they have learnt this term, what are the next steps in their learning and what progress they are making towards this. Together, goals or targets, are set for the following term to work towards.

Information regarding these dates will be communicated closer to the date and families are encouraged to attend. Additionally, parents/carers from K-6 who wish to discuss any matter with their child’s teacher, are invited to contact them via email to arrange a suitable time in Week 8.

Student-Led Conferences



GOALS OF THE CONFERENCE

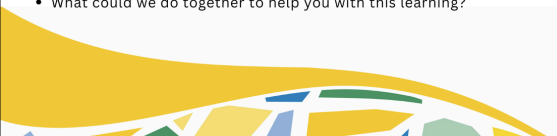
- to help students demonstrate evidence of their learning
- to teach students the process of reflection and self-evaluation
- to facilitate the development of students' organisational and oral communication skills and to increase their self-confidence
- to encourage students, parents and teachers to engage in open and honest dialogue
- to encourage students to accept personal responsibility for their learning

IMPORTANT THINGS TO REMEMBER

- Your child will run the conference
- As part of their learning, all students have been putting considerable time and energy into preparing for this
- The conference is about learning, not behaviour or social issues

PROMPTS TO HELP SUPPORT YOUR CHILD

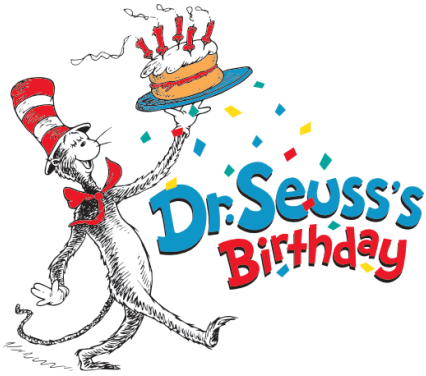
- What were you learning to do in this piece of work?
- What were the steps that you went through to learn this?
- What helped you to learn this?
- What do you need to learn next?
- What are you most proud of and why?
- What are your learning goals in reading/writing/numeracy?
- Which area of learning do you find the easiest/trickiest? Why?
- What could we do together to help you with this learning?



Belinda Hosking

LIBRARY NEWS

DR. SEUSS DAY IS CELEBRATED ANNUALLY ON MARCH 2ND— COINCIDING WITH THE AUTHOR'S BIRTHDAY—TO PROMOTE LITERACY, CREATIVITY, AND THE JOY OF READING IN SCHOOLS AND LIBRARIES.



DR. SEUSS DAY HIGHLIGHTS THE POWER OF READING FOR LEARNING, SOCIAL, AND PROFESSIONAL DEVELOPMENT



IMPORTANT INFORMATION FROM MRS BOXALL

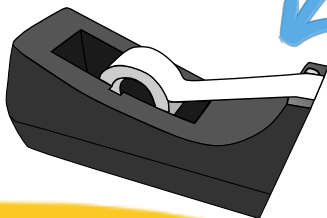
SOMETIMES BOOKS CAN GET WET OR DAMAGED



IF THEY ARE DAMAGED BEYOND REPAIR, AN ACCOUNT WILL BE SENT HOME FOR THE BOOK TO BE PAID FOR SO A REPLACEMENT COPY CAN BE PURCHASED

IT IS EXTREMELY IMPORTANT THAT YOU DO NOT ATTEMPT TO REPAIR THIS YOURSELF

MRS BOXALL HAS SPECIAL TAPE TO MEND THE BOOKS



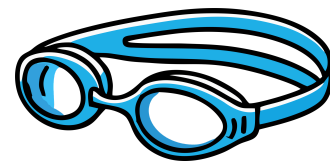
INSTEAD, SEND A NOTE WITH THE DAMAGED BOOK TO MRS BOXALL EXPLAINING WHAT HAPPENED



CANTEEN CARNIVAL NEWS



WE HAVE A SPECIAL MENU
JUST FOR THE SWIMMING CARNIVAL



YEARS 4 TO 6 ONLY

CUT OFF FOR THIS IS MONDAY 9TH MARCH

(YOU CANNOT ORDER FOR THE CARNIVAL
AFTER THIS DATE)

PLEASE READ CAREFULLY

SWIMMING CARNIVAL MENU

PLEASE CONFIRM YOUR CHILDS FACTION ON THE
LUNCH ORDER

THOMAS

XAVIER

GRIFFIN

NAGLE

*CHICKEN SALAD ROLL \$6.50 *HAM SALAD ROLL \$6.50

*CHICKEN BURGER \$6.50 *HAMBURGER \$6.50

* HOT DOG \$4.50

PLAIN MEAT PIE \$4.50 GIANT SAUSAGE ROLL \$4.50

TOMATO SAUCE.60C

WATER 600ML \$2.50 JUICE BOMB \$3.00

JUST JUICE \$2.50

IMPORTANT: GLUTEN FREE AND ANY OTHER DIETARY
REQUIREMENTS ARE TO BE MADE IN PERSON AT THE
CANTEEN

ORDER ON THE QUICKCLIQ LINK
[HTTPS://SFX.WA.EDU.AU/CANTEEN/](https://sfx.wa.edu.au/canteen/)

P&F NEWS

WE HAVE HIT THE GROUND RUNNING WITH 2 EVENTS AND OUR FIRST QUARTERLY MEETING ALREADY IN THE BAG.

THANK YOU TO ALL THE FAMILIES, STAFF AND VENDORS FOR JOINING US FOR WELCOME NIGHT 2026. FROM OUR VOLUNTEERS THAT KEPT THE POPCORN POPPING, PONY RIDES AND THE PIRATE AND FAIRY FACEPAINTERS TO THE MINI GOLF, VOLUNTEER AMBULANCE DISPLAY AND THE RIDE-ON-ANIMALS WE HOPE THERE WAS SOMETHING FOR EVERYONE.



THANK YOU TO HON. SANDRA CARR MLC FOR SUPPORTING OUR ANNUAL BICYCLE RAFFLE, ENABLING THE P&F TO OFFER A HIGH QUALITY BIKE TO OUR FAMILIES.



WE HOPE MANY OF YOU HAD THE OPPORTUNITY TO JOIN US FOR THE FIRST COFFEE MIXER AS A GREAT CHANCE TO HAVE A CHAT TO FAMILIAR FACES AND CONNECT WITH OTHER PARENTS THAT YOU PROBABLY SEE DAILY BUT DON'T GET TO STOP AND HAVE A CONVERSATION WITH. THE COMPLEMENTARY CAFFEINE IS THE CHERRY ON TOP, KEEP AN EYE OUT AT THE BEGINNING OF TERM 3 FOR THE NEXT MIXER MORNING.

P&F NEWS



WE NOW LOOK AHEAD TO

- NATIONAL RIDE TO SCHOOL DAY, FRIDAY 20TH MARCH (WEEK 7) PLEASE REGISTER YOUR INTEREST SO WE CAN CATER FOR A LIGHT BREAKFAST SNACK ON ARRIVAL [HTTPS://TINYURL.COM/322VKCCH](https://tinyurl.com/322VKCCH)
- EARLY YEARS DISCO FOR 4YO KINDY AND PRE-PRIMARY STUDENTS ON THURSDAY 26TH MARCH (WEEK 8); AND
- EASTER RAFFLE. TICKETS WILL BE DISTRIBUTED SHORTLY AND WINNERS ANNOUNCED ON THURSDAY 2ND APRIL (WEEK 9).

THIS YEAR WE INTEND TO OPEN UP THE 2ND HAND UNIFORM SHOP MORE OFTEN, POSSIBLY ASSOCIATED WITH SCHOOL ASSEMBLIES, INCLUDING THIS FRIDAY! DONATIONS OF GOOD QUALITY UNIFORMS CAN BE MADE AT ANY TIME TO THE FRONT OFFICE. KEEP AN EYE OUT FOR THE SIGNAGE AS YOU ENTER THE ASSEMBLY.



P&F SECOND HAND UNIFORM SHOP UNIFORM DONATION REQUEST

Have you got any sports uniforms that you no longer need? The P&F's second hand uniform shop would love to take them off of your hands.

Please drop any eligible items to the front office;

- Sports shirts
- Sports shorts
- Faction shirts
- Kindy/PP shirts

Any uniform donations (formal uniforms, socks, shoes, hats, jackets) are always welcomed.



AS ALWAYS, WE ARE FOREVER GRATEFUL TO OUR VOLUNTEERS THAT HELP TO GET THESE EVENTS COORDINATED AND SUCCESSFULLY DELIVERED. IF YOU FEEL THAT YOU CAN ASSIST WITH ANY EVENTS, PLEASE REACH OUT VIA PANDF@SFX.WA.EDU.AU OUR NEXT COMMITTEE MEETING WILL BE WEEK 3 OF TERM 2.

WE ARE ALSO LOOKING FOR EASY WAYS TO KEEP IN TOUCH WITH OUR PARENTS AND FRIENDS COMMUNITY. OUR COMMITTEE HAVE BEEN WORKING TO BUILD UP OUR PRIVATE FACEBOOK GROUP AND WE HOPE THAT WE CAN CONNECT MORE FAMILIES INTO THE GROUP WHERE WE CAN SHARE INFORMATION ABOUT EVENTS, THANK OUR SUPPORTERS AND LAUNCH REMINDERS FOR KEY DATES LIKE COFFEE MIXERS! SOMETIMES WE DON'T FEEL COMFORTABLE SHARING THIS INFORMATION ON A PUBLIC PAGE. IF YOU'D LIKE TO JOIN THE GROUP, SEARCH FOR SFX P&F OR REACH OUT TO OUR COMMITTEE OR OTHER PARENTS FOR AN INVITE IN SO THAT WE CAN CREATE A ROBUST COMMUNITY PAGE.

*Annalise
P&F Chairperson*



Government of Western Australia
North Metropolitan Health Service
Mental Health, Public Health and Dental Services



School Dental Service Newsletter/Social Media Posts

SCHOOL DENTAL SERVICE, IT'S TIME TO ENROLL!

Every year Dental Health Services (DHS) offers parents and carers the chance to register their kids for free dental care at the School Dental Service (SDS). The offer is open to every student from the year they turn 5 until their 17th birthday and includes check-ups, fillings, and simple extractions.

Your child will soon bring home an envelope with an enrolment form, Frequently Asked Questions, and reply-paid envelope from DHS. Just fill in the enrolment form, pop it in the reply-paid envelope, and put it in your nearest post box.

Once we receive your form at DHS our team will register your child and arrange for you to receive an appointment in the mail.



If you would like further information on DHS services and the SDS please visit our website: www.dental.wa.gov.au or scan the QR code.

SCHOOL DENTAL SERVICE, REMINDER TO ENROLL!

Recently your child may have brought home an envelope with an enrolment form, FAQ and reply-paid envelope from Dental Health Services. Please remember to fill in the enrolment form, pop it in the reply-paid envelope, and put it in your nearest post box.

Once we receive your form at DHS our team will register your child and arrange for you to receive an appointment in the mail.



If you would like further information on DHS services or to find your nearest SDS Dental Therapy Centre, please visit our website: www.dental.wa.gov.au or just scan the QR code.

SCHOOL DENTAL SERVICE, HERE TO HELP!

Dental Health Services (DHS) offers free general dental care for kids at the School Dental Service (SDS). The offer is open to every student from the year they turn 5 until their 17th birthday and includes check-ups, fillings, x-rays and fissure sealants.

We can also help with any urgent dental problems, like sore teeth, lost fillings, or infections, even if you are currently not enrolled. Simply contact your nearest SDS Dental Therapy Centre for advice.

If you would like to enrol your kids, or if they have an urgent dental problem, you can find your nearest centre on our website: www.dental.wa.gov.au or scan the QR code



COMMUNITY NEWS

Strong Self Strong Spirit

Confidential Referral Form



The "Strong Self, Strong Spirit" service uses strengths based practices to improve the wellbeing of children and will build the capacity of and connections between their families, teachers and agencies involved in their lives. The service will target 8-12 year olds whose behaviour has brought them to the attention of School Principals, police or youth justice services.

Weekly mentoring sessions will engage mentees in activities aimed at building resilience and self-regulation of behaviour. The mentors will act as a role model and supporter, to intervene early and prevent or reduce emergence of anti-social or offending behaviour.

Client placement onto the program relies on a referral process and individual students may be referred by teachers, school psychologists or relevant agency such as the Department for Child Protection and Family Support.

Personal Information

| | |
|---------------------|---|
| Child's Name | |
| Date of Birth | |
| Address | |
| Contact Number | |
| School | |
| Gender | <input type="checkbox"/> Male <input type="checkbox"/> Female <input type="checkbox"/> Other: |
| Cultural Background | <input type="checkbox"/> Aboriginal <input type="checkbox"/> Torres Strait Islander <input type="checkbox"/> Other: |

Guardian's Information

| | |
|----------------|--|
| Name | |
| Address | |
| Contact Number | |

Purpose of Referral / Issues Identified

| Personal Factors | Social, Cultural and/or Community Factors |
|--|---|
| <input type="checkbox"/> Poor self-esteem | <input type="checkbox"/> Bullying |
| <input type="checkbox"/> Need for social contact | <input type="checkbox"/> Family conflict |
| <input type="checkbox"/> Mental health issues | <input type="checkbox"/> Conflict with police/security officers |
| <input type="checkbox"/> Anger/violent behaviour | <input type="checkbox"/> Homelessness or risk of |
| <input type="checkbox"/> Motivation/general attitude | <input type="checkbox"/> Domestic violence |
| <input type="checkbox"/> Truanting/not participating in training or work | <input type="checkbox"/> Substance use/abuse issues |

Strong Self Strong Spirit

Confidential Referral Form



Provide any Other Information

| | |
|--|--|
| | |
|--|--|

Referral Information

| | |
|--------------------------|--|
| Referrer's Name | |
| Position | |
| People Aware of Referral | |
| Date of Referral | |

Please complete and return to:

Team Leader
24-28 Gregory Street
PO Box 50 Geraldton WA 6531
Tel: 0429 020 235
Website: www.ngala.com.au
Email: SSSS@ngala.com.au

Strong Self Strong Spirit has been funded under the Children and Parenting Support program by the Australian Government Department of Social Services. Go to www.dss.gov.au for more information

STRONG SELF STRONG SPIRIT

Free support for children aged 8 to 12 years



Help master tough or confusing feelings, manage self control, cope with change and learn to bounce back.

Our team will support your child as they learn to manage their feelings and behaviour.

Strong Self Strong Spirit works with strengths to help improve your child's wellbeing. The program runs for one term and includes:

- Weekly after school group sessions
- One-to-one weekly support
- Family sessions
- Excursions

To register your child for the Strong Self Strong Spirit program, contact the program Team Leader.



AGE RANGE: 8 to 12 years

DURATION: 1.5 hours per week over a term

LOCATION: Geraldton

ENQUIRIES: 9921 4477 or 0429 020 235

EMAIL: ssss@ngala.com.au

No referral is necessary

Supported by:



Australian Government

Department of Social Services

www.ngala.com.au



Every Child Develops Differently

A free education session for parents who are noticing differences or seeking reassurance for their young child

Join us as we explore what development can look like in the early years, with a focus on your child's strengths, emerging skills, and support needs.

- Communication and language (speech, play, behaviour)
- Movement and coordination (gross and fine motor skills)
- Social connection and emotional regulation
- Everyday skills like eating, dressing, and daily routines
- The wide range of typical early development
- When families might choose to seek extra support
- How early support can help children feel safe, confident, and included

This FREE session is strengths-based, neuro-affirming, and parent-led. Our goal is to help you understand your child, trust your instincts, and feel informed about any future steps.

Monday 16 March 2026 | 9am - 12pm

Geraldton Venue TBC

To book: <https://bit.ly/45HzcMS>

Enquiries: Midwest.PCWA@ngala.com.au | T: 08 9921 4477



Understanding and Supporting Young Children with ADHD

A free parenting workshop for parents and caregivers of young children

Many young children experience differences in attention, activity level, impulse control, emotional regulation, and sensory processing. For some children, these differences align with ADHD, while for others they may reflect a unique neurodevelopmental profile that is still emerging.

This supportive, non-judgemental workshop is designed to help parents better understand ADHD through a neuro-affirming lens, focusing on strengths, differences, and practical strategies that support connection, regulation, and participation—regardless of whether a child has a formal diagnosis.

Delivered by experienced Occupational Therapists, this session focuses on what parents can do now to support their child at home, in early learning settings, and in the community. **A diagnosis is not required to attend.**

Tuesday 17 March 2026 | 12:30 - 2:30pm

Geraldton Venue TBC

To book: <https://bit.ly/4asc1LA>

Enquiries: Midwest.PCWA@ngala.com.au | T: 08 9921 4477



How to Positively Support Behaviour for Autistic Children in the Early Learning Years

A free parenting workshop exploring calm, confident, child-centred behaviour support

This workshop explores how early learning environments can support children's behaviour through connection, understanding, and proactive strategies — not punishment or reaction. We'll cover:

- A simple, preventative framework for supporting behaviour
- Understanding the link between sensory needs, emotions & behaviour
- How adults co-regulate and build relational safety
- Practical strategies to reduce dysregulation
- Smooth transitions built into daily routines
- Supporting children at their current developmental and play stage
- Creating consistent approaches across the child's support team

Thursday 19 March 2026 | 5:30 - 8:30pm

Geraldton Venue TBC

To book: <https://bit.ly/4a5DJUc>

Enquiries: Midwest.PCWA@ngala.com.au | T: 08 9921 4477



Understanding and Supporting Sensory Process in Young Children

A free parenting workshop to learn how to better understand and support your child's sensory needs

- What is sensory processing and how it may show up for children with neurodivergence
- How to recognise your child's sensory signals
- Using Sensory Profile insights in practical, everyday ways
- Simple home strategies - calming spaces, sensory breaks, movement ideas, and supportive sound/lighting
- Regulation tools for both sensory seekers and children who are sensitive to touch, sound, movement or visual input
- Choosing and using sensory tools safely
- Keeping sensory supports consistent across home, school and community

Friday 20 March 2026 | 9am - 12pm

Geraldton Venue TBC

To book: <https://bit.ly/kalsensory>

Enquiries: Midwest.PCWA@ngala.com.au | T: 08 9921 4477

About Kaleidoscope

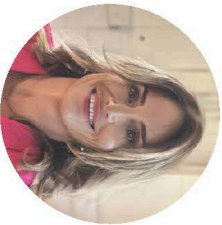
Kaleidoscope is a free program designed to help families with young children (0–8 years) who may be showing signs of developmental delay. They partner with trusted community organisations, schools and childcare services to identify children early and connect families to the right supports.

Their team of highly skilled Allied Health Therapists (Occupational Therapists (OT), Speech Pathologists and Psychologists) from Greenhouse Paediatrics, can provide up to 20 hours of support to help families navigate developmental concerns, link into funded and non-funded services and build a community of support around their child.

In collaboration with **Parenting Connection WA**, the Kaleidoscope team will travel to regional and remote areas of Western Australia to deliver customised training for childcares, local organisations and families, based on the needs of each community.

This program is proudly supported by the Stan Perron Charitable Foundation.
To find out more: greenhousepaediatrics.com.au/programs/kaleidoscope-program/

Meet the Team



Tasha Alach | Program & Clinical Lead

Tasha brings over 25 years of experience in WA's disability sector, leading multidisciplinary allied health teams supporting autistic children, their families, and communities. As an OT, she is passionate about driving change to ensure children receive timely diagnostic assessment and early intervention.



Angela Dudley | Senior Occupational Therapist

With over 20 years' experience across early childhood, disability, community and leadership roles Angela specialises in early childhood development, neurodevelopmental differences, regulation and parent coaching. Angela is known for her warm, thoughtful and practical approach, supporting families and teams to navigate complexity with clarity and compassion.



Free Parenting Workshops

Led by Greenhouse Paediatrics - Allied Health Clinicians

Every Child Develops
Differently
Mon 16 March | 9am - 12pm

Understanding & Supporting
Young Children with ADHD
Tue 17 March | 12:30 - 2:30pm

How to Positively Support
Behaviour for Autistic Children
Thu 19 March | 5:30 - 8:30pm

Understanding & Supporting
Sensory Process
Fri 20 March | 9am - 12pm

For parents who are concerned about the development of their children in the early years. No diagnosis required.

All workshops will be held in Geraldton. Venue TBC.

To book: Search 'Kaleidoscope' at parentingconnectionwa.com.au

Enquiries: E: Midwest.PCWA@ngala.com.au | T: 08 9921 4477

2026 SSWA STATE TRIALS AF12s Girls



BASICS

Cost: \$25

DOB: 2014/2015

Training & Trial Venue: TBC

Training: Tuesdays 4:00-6:00pm

HOW IT WORKS

- Trials will run over a four week period with the total number of students reduced after each phase.
- All details, including trial times, will be emailed out to families.

Phase 1: All players welcome → Phase 2: 90 Player Squad → Phase 3: 60 Player Squad → Phase 4: 30 Player Squad → Final 20 Player Squad Selected

PHASE ONE
FRIDAY APRIL 17

GAME ONE:
8:30AM - 10:00AM
GAME TWO:
10:30AM - 12:00PM

GAME THREE:
12:30PM - 2:00PM
GAME FOUR:
2:30PM - 4:00PM



TO NOMINATE



Hockey WA

GERALDTON

PRIMARY SCHOOL HOCKEY CARNIVAL

- ▶ Round-Robin Mixed Carnival for Year 5 and 6 students
- ▶ 5-a-side matches
- ▶ Games commence from 10.00am
- ▶ Players required to wear mouthguards and shinpads during matches

 **Thursday 26 March**

 Iluka Hockey Stadium, Geraldton

Register Now!



Nominations close COB Wednesday 11 March



BOYS TRIALS - PHASE 1

Once nominated, the Tour Leader will allocate each of the nominees to ONE Phase 1 trial

TUES 31ST MARCH

1A: 8:30am - 10:30am

1B: 11am - 1pm

1C: 1:30pm - 3:30pm

Venue: Perth Metro, TBC

WED 1ST APRIL

1D: 8:30am - 10:30am

1E: 11am - 1pm

1F: 1:30pm - 3:30pm

Venue: Perth Metro, TBC

FRI 10TH APRIL

1G: 10am - 12pm

1H: 12:30pm - 2:30pm

Venue: Mandurah, TBC

BOYS TRIALS - PHASE 2

FRI 17TH APRIL

**100 player squad cut
from Phase 1 trials**

COST - \$25

ELIGIBILITY - BORN 2014/2015

**CHAMPIONSHIP INFO:
2nd - 9th August 2026
Canberra, ACT**



AFL 12 & UNDER BOYS SSWA 2026 INTERSTATE TRIALS

FURTHER TRIAL INFO ON WEBSITE

SCAN ME



BETTER HEALTH PROGRAM

Want to prepare your kids for a healthier future?

The Better Health Program is a **FREE**, online and flexible program for you and your 6-12 year old child.

The program includes



Health coach support – Families will be paired with a qualified health coach who will take the time to learn about their health goals and provide personalised support over 10 calls that last up to 30-minutes each. These calls offer flexible timing so busy families can still get support.



Online learning modules – Families also get access to a library of bite-sized learning resources and fun online activities to enjoy with their child, and will receive a voucher for completing the program.

INCLUDES
FREE
RESOURCES!

Sign up today



Learn more

 betterhealthprogram.org

 1300 822 953



Government of Western Australia
Department of Health

Powered by

BETTER HEALTH CO.

Concerned about your child's health?

We're here to help,
without judgment.



Join the Better Health Program Online. **FREE for WA families.**

BETTER HEALTH PROGRAM



Government of **Western Australia**
Department of Health

62%

of children on the
program cut back
on **snack foods**

Join the Better Health
Program Online.
FREE for WA families.

Support your child's health
without judgment or shame.



BETTER HEALTH PROGRAM



Government of **Western Australia**
Department of Health

KEY WORD SIGN INTEREST GROUP

Do you want to learn more about Key Word Sign? Come and connect with others to learn, share, use and practice Key Word Signs

Facilitated by **Aasta Abbott**
(certified practising speech pathologist, Key Word Sign Australia user)

- ✎ Learn and practice individual Key Word Sign in real life situations
- ✎ Increase your knowledge and confidence
- ✎ Receive valuable resources
- ✎ Meet other Key Word Sign users

Light refreshments provided

These sessions are **FREE** - all you need to do is register!



When:

4 x Monday evenings
9th March 16th March
23rd March 30th March

5.30pm - 7.00pm

Where:

Multi Purpose Centre,
Geraldton

SCAN HERE





Ph: 0419 955 182

E: programs@etwa.au

WE ARE PROUDLY DELIVERING PROJECTS FOR THE PEER SUPPORT AND CAPACITY BUILDING (PSCB) GRANT FOR THE NDIS

VOLUNTEERS NEEDED

 **9921 1433 CENTACARE**
 cvs@centacaregeraldton.org.au

OPERATIONS

- Dignity Drive Volunteers – Share the Dignity
- "It's in the Bag" Volunteers – Share the Dignity
- Little Shop on Wheels"/Mobile Van Volunteer – Foodbank
- Community Engagement Volunteer – Short Back & Sidewalks

EDUCATION

- Strong Self Strong Spirit Volunteer – Ngala (15+)
- Youth Reference Group Member – Headspace (16 – 25)
- Adult Literacy & Numeracy Tutor – Read Write Now
- EdConnect – Mentor
- EdConnect – Learning Support Volunteer

GARDENING

- Gardening Volunteer – St. John of God Hospital
- General Gardening Volunteer – Geraldton Cultural Trust
- Museum Gardening Volunteer – Greenough Museum & Garden Community Association (Families can volunteer)
- Gardening Volunteer – Geraldton Historical Society
- Community Nursery Volunteer – City of Greater Geraldton

RETAIL

- Retail Sales Volunteer – Red Cross (15+)
- Retail Shop Assistant – St. Vinnies (15+)
- Kiosk Assistant – Geraldton Auxiliary Hospital
- Scales/Customer Service Volunteer – Foodbank

ADMINISTRATION

- Career Support Volunteer – Dress for Success WA
- Museum Admin. Volunteer – Greenough Museum & Gardens
- Men's Hub Volunteer – Men's Hub
- Admin Volunteer – Geraldton Historical Society



Volunteers NEEDED

 **9921 1433 CENTACARE**
 cvs@centacaregeraldton.org.au

EMERGENCY SERVICES

- Volunteer Ambulance Officer for St. John

SEWING & STYLING

- Sewing Volunteer – Holland Street School
- Volunteer Stylist – Dress for Success WA

CLEANING & MAINTENANCE

- Car Cleaner – Ruoh Community Services
- Janitor – Salvation Army

MUSEUM

- Museum Assistant – Geraldton Historical Society
- Volunteer Museum Helper/Guide – Monsignor Hawes Heritage Centre

DRIVING

- Youth Mentor – PCYC
- Wheels of Joy Driver – Nazareth House

MEALS

- Baker – Ruoh
- Soup Kitchen Volunteer – Diocese of Geraldton
- Food Preserving Volunteer – Holland Street School

RECREATIONAL ACTIVITIES

- Fishing Volunteer – Fishability
- Section Leaders – Geraldton Scout Group (18+)
- Soccer Coach – Chapman Athletic Soccer Club (15+)

 **9921 1433 CENTACARE**
 cvs@centacaregeraldton.org.au

HAIRDRESSING

- Hairdresser/Barber – Short Back & Sidewalks

TOURISM

- Cathedral Tour Guide – Diocese of Geraldton
- Cruise Ship Meet & Greet – Midwest Ports

INVENTORY SORTING

- Volunteer Toy Librarian – Geraldton Community Toy Library (15+)

ENVIRONMENT

- EcoSpace Volunteer for EcoSpace – Headspace (13 – 50)

EVENTS & ENTERTAINMENT

- Event Volunteer – Variety West
- Event Volunteer – The Apex Club of Geraldton
- Games & Good Times Champion – Nazareth House
- Miniature Rail Run Day Event Volunteer – Batavia Coast Miniature Railway Society Inc.

JUSTICE SUPPORT

- Independent Visitor – Office of the Inspector of Custodial Services



NOTE: Most roles would require you to complete a National Police Check and/or Working with Children Check

NOTE: Most roles would require you to complete a National Police Check and/or Working with Children Check



Share your world

Become a foster carer

It's the little things that matter most – like having a safe place to call home, someone you can smile with and the right support.

You can make an extraordinary difference in the life of a young person by sharing those ordinary, everyday moments.

We are looking for compassionate individuals, couples and families to become foster carers to provide a safe and supportive home for vulnerable children and young people. We'll support you 24/7 and provide all the training you need.

If you have a spare bedroom and time to share, we'd love to hear from you. Contact us today and be the positive change in a child's life!

1300 592 227

lwb.org.au/foster-care

**LIFE
WITHOUT
BARRIERS**



APRIL SCHOOL HOLIDAY WORKSHOPS

Enrol your children for Black Swan State Theatre Company's school holiday Creative Learning workshops!
No experience needed.



BLACK SWAN
STATE THEATRE COMPANY

VISIT BLACKSWANTHEATRE.COM.AU TO LEARN MORE



BLACK SWAN
STATE THEATRE COMPANY

APRIL SCHOOL HOLIDAY WORKSHOPS

ENROL YOUR CHILDREN FOR BLACK SWAN STATE THEATRE COMPANY'S SCHOOL HOLIDAY CREATIVE LEARNING WORKSHOPS!

VISIT BLACKSWANTHEATRE.COM.AU TO LEARN MORE